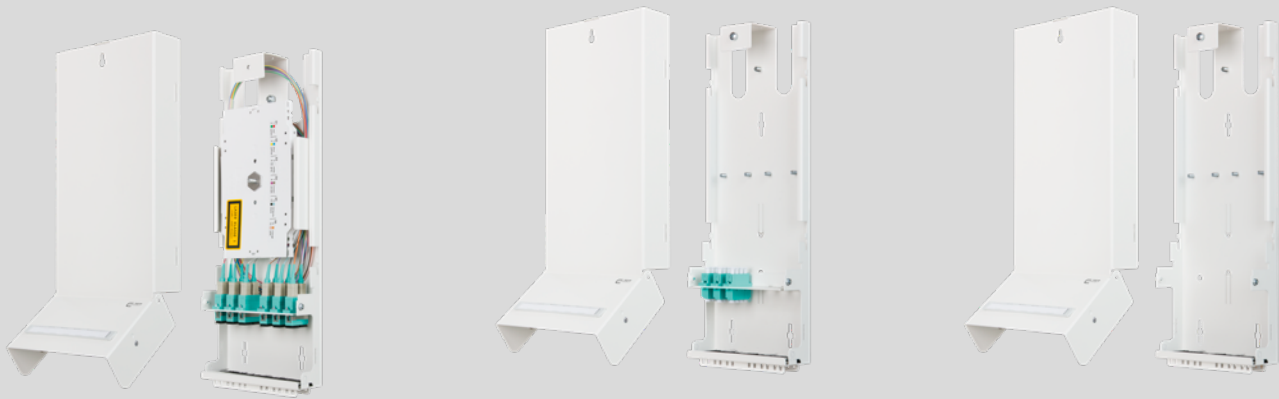


# Product Information – Consolidation Point



Consolidation points (CPs) are stationary points in floor cabling. They are often used in open office cabling systems and are a core element of stationary cable systems that connect to the telecommunications junction box. They allow the administrator to flexibly manage floor cabling through additional patch options.


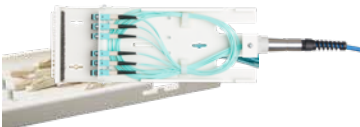

## Properties

- > Surface-mounted housing in sheet steel, powder-coated (white, RAL 9010), H x W x D: 330 x 130 x 45 mm
- > easy wall mount
- > service-friendly patching thanks to hinged and removable cover in the patch area, connected patch cords can be strain-relieved
- > the cable management area with removable cover offers good access and safe guidance of pigtails or VIKs. When used with DCCS2 components, these can easily be mounted in the CP Labelling field on patch area cover
- > available in three variants:
  - > Variant splice: with adapters and pigtails Variant
  - > Variant VIK: with adapters, prepared for pre-assembled installation cables (VIK)
  - > Variant DCCS: prepared for DCCS2 components with copper and/or LWL
- > Variants splice and VIK:
  - > with SC-, LC- and E2000 adapters
  - > available for fiber types OM3, OM4, OM5 and OS2

## Applications

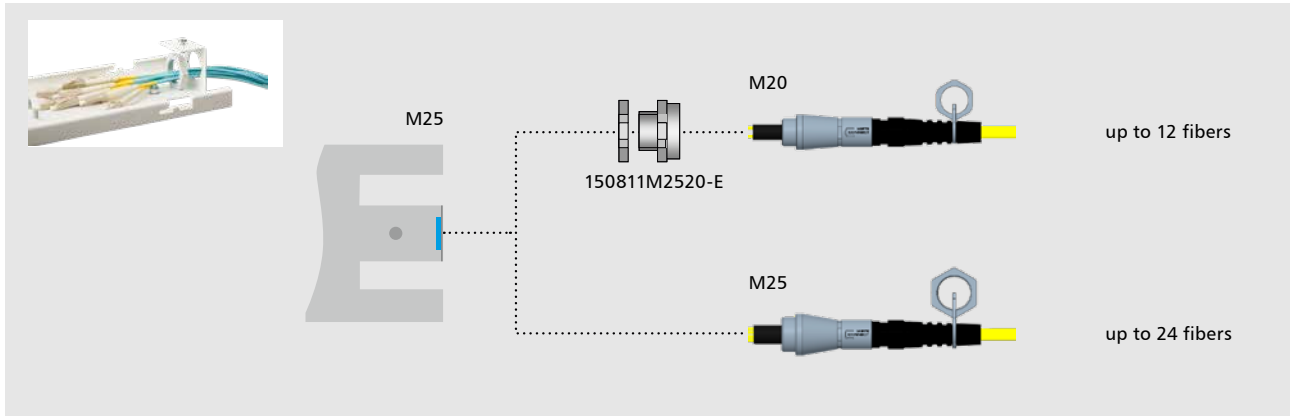
- > Floor cabling
- > distribution technology in buildings
- > Cabling in industrial areas

## Equipment variants

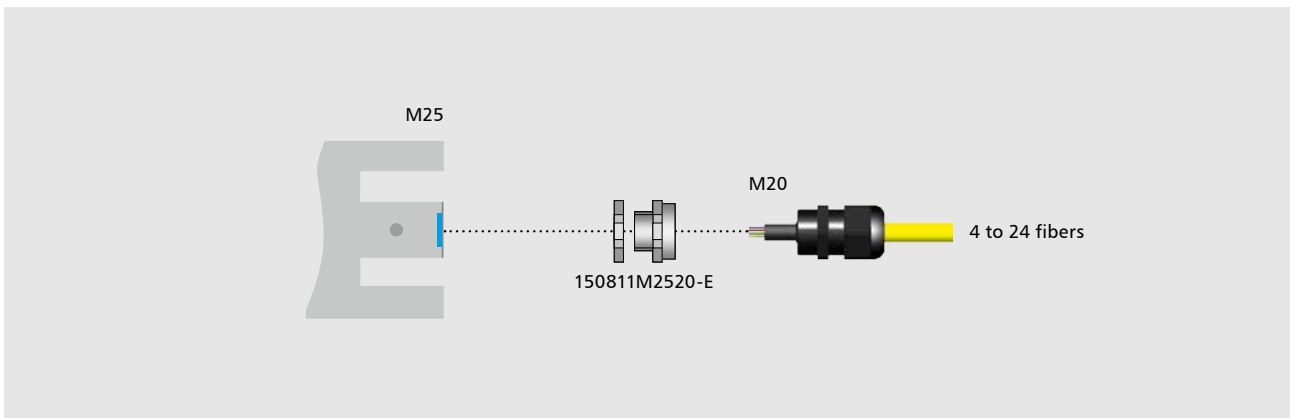
| DESIGNATION     | VARIANT SPLICE  | VARIANT VIK  | VARIANT DCCS  |
|-----------------|---|--|---|
|                 |    |    |    |
| Properties      | <ul style="list-style-type: none"> <li>&gt; equipped with splice cassette, crimp splice protection holder, pigtails and adapters</li> <li>&gt; pigtails are stored in splice cassettes ready to splice</li> <li>&gt; Pigtail connector cleaned and plugged into adapters, configuration according to colour code IEC 60304</li> <li>&gt; Capacity: max. 12 pigtails, stored on 6 duplex adapters</li> </ul> | <ul style="list-style-type: none"> <li>&gt; equipped with adapters</li> <li>&gt; prepared for the fixing of pre-assembled installation cables (OpDAT VIK). Depending on the VIK type selected, additional accessories for cable fixation tening must be ordered</li> <li>&gt; Capacity: max. 6x LC quad adapters to terminate 24 fibers, max. 6x duplex adapters to terminate 12 fibers</li> </ul> | <ul style="list-style-type: none"> <li>&gt; prepared for the application of 2 DCCS assemblies with copper or fiber optic connections</li> </ul> |
| Scope of supply | <ul style="list-style-type: none"> <li>&gt; Cable gland M25</li> <li>&gt; cable tie, spiral hose</li> <li>&gt; material for wall mounting</li> </ul>  | <ul style="list-style-type: none"> <li>&gt; Cable ducts</li> <li>&gt; Material for wall mounting</li> </ul>  | <ul style="list-style-type: none"> <li>&gt; Material for wall mounting</li> </ul>   |

## Optional accessories for variant VIK

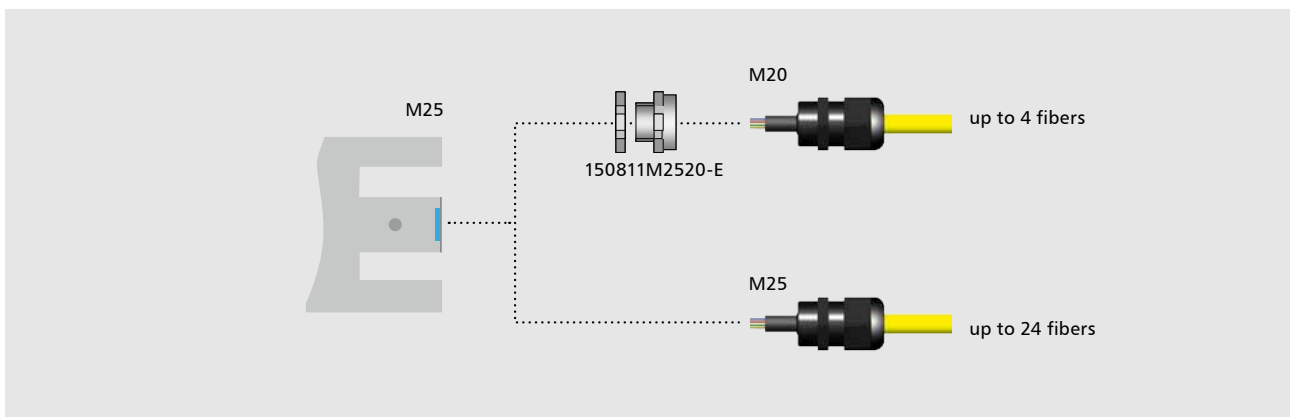
For connection of VIKs with universal cable



For connection of VIKs with mini-breakout cable



For connection of VIKs with breakout cable



## Ordering information

### Variant Splice

| FIBER TYPE            | ADAPTER TYPE     | COLOR ADAPTER         | NUMBER OF ADAPTERS | NUMBER OF PIGTAILS | PART NUMBER  |              |
|-----------------------|------------------|-----------------------|--------------------|--------------------|--------------|--------------|
| OM3                   | LC-Duplex        | aqua                  | 3                  | 6                  | 1503057703-E |              |
|                       |                  |                       | 6                  | 12                 | 1503057706-E |              |
|                       | SC-Duplex        | aqua                  | 3                  | 6                  | 150305BA03-E |              |
|                       |                  |                       | 6                  | 12                 | 150305BA06-E |              |
|                       | OM4              | LC-Duplex             | violet             | 3                  | 6            | 1503077503-E |
|                       |                  |                       |                    | 6                  | 12           | 1503077506-E |
| SC-Duplex             |                  | violet                | 3                  | 6                  | 150307BB03-E |              |
|                       |                  |                       | 6                  | 12                 | 150307BB06-E |              |
| OM5                   | LC-Duplex        | lime green            | 3                  | 6                  | 1503087M03-E |              |
|                       |                  |                       | 6                  | 12                 | 1503087M06-E |              |
|                       | SC-Duplex        | lime green            | 3                  | 6                  | 150308BM03-E |              |
|                       |                  |                       | 6                  | 12                 | 150308BM06-E |              |
| OS2                   | LC-Duplex UPC    | blue                  | 3                  | 6                  | 1503097603-E |              |
|                       |                  |                       | 6                  | 12                 | 1503097606-E |              |
|                       | LC-Duplex APC    | green                 | 3                  | 6                  | 1503097602-E |              |
|                       |                  |                       | 6                  | 12                 | 1503097604-E |              |
|                       | SC-Duplex UPC    | blue                  | 3                  | 6                  | 150309E203-E |              |
|                       |                  |                       | 6                  | 12                 | 150309E206-E |              |
|                       | SC-Duplex APC    | green                 | 3                  | 6                  | 150309F203-E |              |
|                       |                  |                       | 6                  | 12                 | 150309F206-E |              |
|                       | E2000-Duplex APC | green                 | 3                  | 6                  | 1503095F03-E |              |
|                       |                  |                       | 6                  | 12                 | 1503095F06-E |              |
|                       | OS2              | LC-Duplex APC Grade B | green              | 3                  | 6            | 1503097N03-E |
|                       |                  |                       |                    | 6                  | 12           | 1503097N06-E |
| SC-Duplex APC Grade B |                  | green                 | 3                  | 6                  | 150309BN03-E |              |
|                       |                  |                       | 6                  | 12                 | 150309BN06-E |              |

## Ordering information

### Variant VIK

| FIBER TYPE          | ADAPTER TYPE     | COLOR ADAPTER | NUMBER OF ADAPTERS | NUMBER OF PIGTAILS | PART NUMBER  |
|---------------------|------------------|---------------|--------------------|--------------------|--------------|
| OM3                 | LC-Quad          |               |                    |                    | 1503007806-E |
|                     | LC-Duplex        | aqua          | 6                  | 0                  | 1503007706-E |
|                     | SC-Duplex        |               |                    |                    | 150300BA06-E |
| OM4                 | LC-Quad          |               |                    |                    | 1503007906-E |
|                     | LC-Duplex        | violet        | 6                  | 0                  | 1503007506-E |
|                     | SC-Duplex        |               |                    |                    | 150300BB06-E |
| OM5                 | LC-Quad          |               |                    |                    | 1503007L06-E |
|                     | LC-Duplex        | lime green    | 6                  | 0                  | 1503007M06-E |
|                     | SC-Duplex        |               |                    |                    | 150300BM06-E |
| OS2                 | LC-Quad          | blue          |                    |                    | 1503007106-E |
|                     | LC-Quad APC      | green         |                    |                    | 1503007A06-E |
|                     | LC-Duplex        | blue          |                    |                    | 1503007406-E |
|                     | LC-Duplex APC    | green         | 6                  | 0                  | 1503007606-E |
|                     | SC-Duplex        | blue          |                    |                    | 150300E206-E |
|                     | LC-Duplex APC    | green         |                    |                    | 150300F206-E |
|                     | E2000-Duplex APC | green         |                    |                    | 1503005F06-E |
| <b>Variant DCCS</b> |                  |               |                    |                    | 15030D0000-E |

other variants on request.

## Accessories

|                             |            |               |
|-----------------------------|------------|---------------|
| Reductions                  | M25 to M20 | 150811M2520-E |
| Crimp splice protection OM4 | 12 piece   | 15090401-E    |
|                             | 150 piece  | 15090401-I    |

To configure the required patch cords and VIKs, use our cable configurator, which you can find on our homepage [www.metz-connect.com](http://www.metz-connect.com). This allows you to configure cables individually, according to your requirements, and order them directly.

METZ CONNECT GmbH is a member of the following organizations and associations.



**METZ CONNECT GmbH**

Im Tal 2  
78176 Blumberg  
Germany

Phone +49 7702 533-0  
Fax +49 7702 533-189

info@metz-connect.com  
www.metz-connect.com

**METZ CONNECT USA Inc.**

200 Tornillo Way  
Tinton Falls, NJ 07712  
USA

Phone +1-732-389-1300  
Fax +1-732-389-9066

**METZ CONNECT France SAS**

28, Rue Schweighaeuser  
67000 Strasbourg  
France

Phone +33 3886 170 73  
Fax +33 3886 194 73

**METZ CONNECT AUSTRIA GmbH**

c/o German chamber of commerce  
in Austria

Schwarzenbergplatz 5, Top 3/1  
1030 Vienna  
Austria

Phone +43 1 227 12 64  
Fax +43 1 227 12 66

**METZ CONNECT Zhongshan Ltd.**

Ping Chang Road  
Ping Pu Industrial Park  
Sanxiang Town  
Zhongshan City, 528463  
Guangdong Province  
China

Phone +86 760 86365 055  
Fax +86 760 86365 050

**METZ CONNECT Asia Pacific Ltd.**

Suite 1803, 18/F  
Chinachem Hollywood Centre,  
1 Hollywood Road, Central  
Hong Kong

Phone +852 26 027 300  
Fax +852 27 257 522

