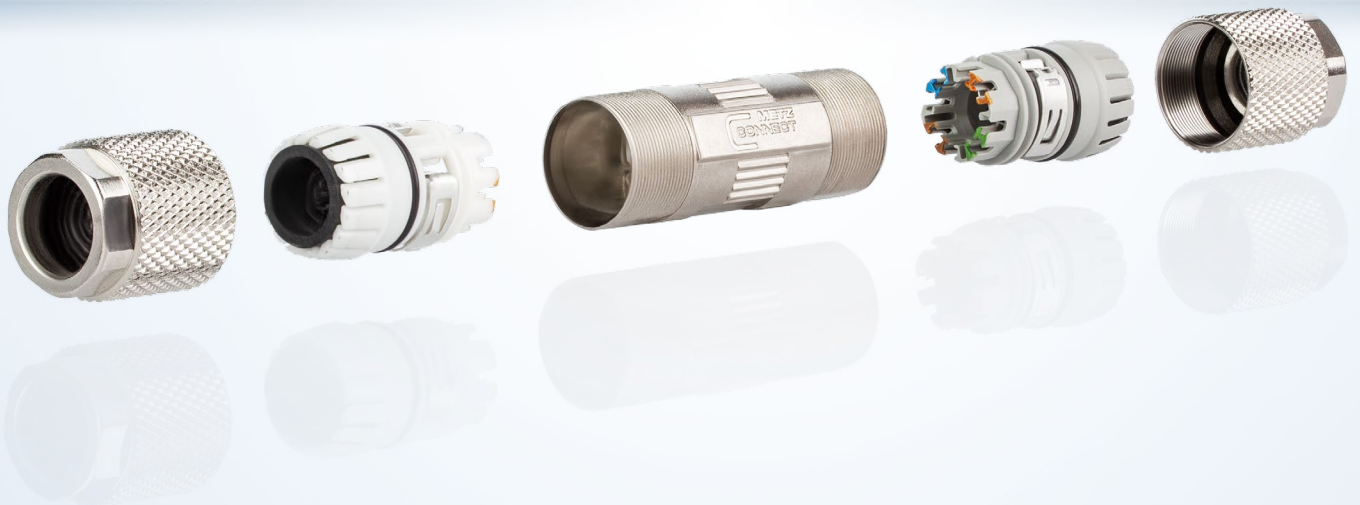


# Cable Connector Class F<sub>A</sub> – Fully Shielded Cable Connector for Field Assembly



# Cable Connector Class F<sub>A</sub>

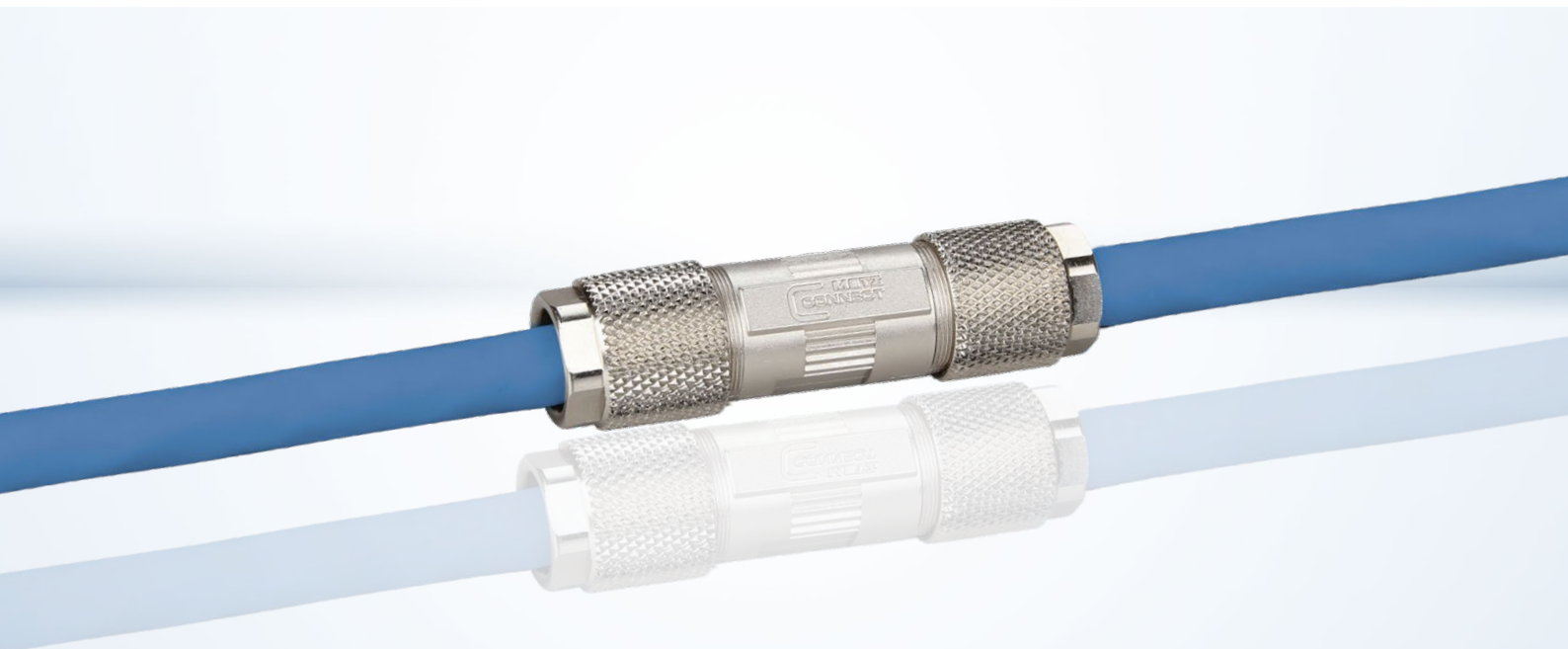
There may be situations when maintaining or extending network cabling but also when installing a new one that a cable is just a bit too short. A possible solution would be to replace this cable in its whole length – an action involving in any case high effort and being sometimes even impossible due to the local conditions.

The cable connector Class F<sub>A</sub> is the easy and smart solution to extend or to connect data cables without any special tool. By its slim and round design it can be used everywhere, even in restricted space. The cable connector Class F<sub>A</sub> is a must-have for the basic equipment of any tool box!

## Benefits

- > cable connector for field assembly Class F<sub>A</sub> for 8 wire cables
- > to connect/extend/repair/relocate copper data cables up to Cat.7<sub>A</sub>
- > compliance to Class FA up to 1000 MHz according to ISO/IEC 11801 Ed.2.2:2011-06 in connection with Cat.7A copper cables\*<sup>1</sup>
- > GHMT certified to ISO/IEC 11801 Ed.2.2:2011-06 and IEC 61156-5 Ed.2.1:2012-12
- > suitable for 10 GBit Ethernet (IEEE 802.3an), Remote Powering (PoE, PoE plus and UPoE) and HDBaseT
- > compact design: diameter 16.8 mm x length 64 mm
- > IP67 protected housing in combination with IP67 appropriate cables\*<sup>2</sup>
- > refined zinc die-cast housing
- > easy and fast assembly without special tools
- > shield connection and strain relief integrated
- > easy connection of data cables AWG 26/1 to 22/1 (solid wire) and AWG 26/7 to 22/7 (stranded wire) to insulation displacement connectors (IDC)
- > solid copper wire diameter 0.4 to 0.64 mm
- > stranded copper wire diameter 0.48 to 0.76 mm
- > conductor diameter up to 1.6 mm
- > suitable for cables with an overall diameter of 5.0 to 9.7 mm\*<sup>2</sup>
- > fully shielded version according to DIN EN 50173-1

\*1, \*2 see data sheet for more detailed specification



## Product Overview

PRODUCT NAME	PART NUMBER	VARIANT	IMAGE
Cable Connector Class F <sub>A</sub>	130863-02-E	-	
GC600 F1 23 Cat.6 <sub>A</sub> U/FTP 4P LSHF	1308436A3214M	simplex	
	1308436A32141	500 m drum	
	1308436A32142	1000 m drum	
MC GC1000 plus23 Cat.7 S/FTP 4P LSHF Class E <sub>ca</sub>	130842703214M	simplex yard goods	
	1308427032141	simplex 500 m drum	
	1308427032142	simplex 1000 m drum	
	1308427032144	duplex yard goods	
	1308427032143	duplex 500 m drum	
MC GC1000 pro23 Cat.7 S/FTP 4P LSHF-FR Class D <sub>ca</sub> s2 d1 a1	1308427A3424M	simplex	
	1308427A34241	500 m drum	
	1308427A34242	1000 m drum	
MC GC1300 pro22 Cat.7 <sub>A</sub> S/FTP 4P LSHF-FR Class D <sub>ca</sub> s2 d2 a1	1308427B3414M	simplex yard goods	
	1308427B34141	simplex 500 m drum	
	1308427B34142	simplex 1000 m drum	
	1308427B34144	duplex yard goods	
	1308427B34143	duplex 500 m drum	
MC IC1000 PUR 23/1 Cat.7 S/FTP 4P Class F <sub>ca</sub>	1308427038101	simplex 500 m drum	
	1308427038102	simplex 1000 m drum	

METZ CONNECT GmbH is member of the following organizations and associations.



**METZ CONNECT GmbH**

Im Tal 2  
78176 Blumberg  
Germany

Phone +49 7702 533-0  
Fax +49 7702 533-189

info@metz-connect.com  
www.metz-connect.com



**METZ CONNECT USA Inc.**

200 Tornillo Way  
Tinton Falls, NJ 07712  
USA  
Phone +1-732-389-1300  
Fax +1-732-389-9066

**METZ CONNECT France SAS**

28, Rue Schweighaeuser  
67000 Strasbourg  
France  
Phone +33 3886 170 73  
Fax +33 3886 194 73

**METZ CONNECT Zhongshan Ltd.**

Ping Chang Road  
Ping Pu Industrial Park  
Sanxiang Town  
Zhongshan City, 528463  
Guangdong Province  
China  
Phone +86 760 86365055  
Fax +86 760 86365050

**METZ CONNECT Asia Pacific Ltd.**

Suite 1803, 18/F  
Chinachem Hollywood Centre,  
1 Hollywood Road, Central  
Hong Kong  
Phone +852 26 027 300  
Fax +852 27 257 522

