

# Data sheet

## OpDAT adapter SC-Duplex OM3

Page 1/5

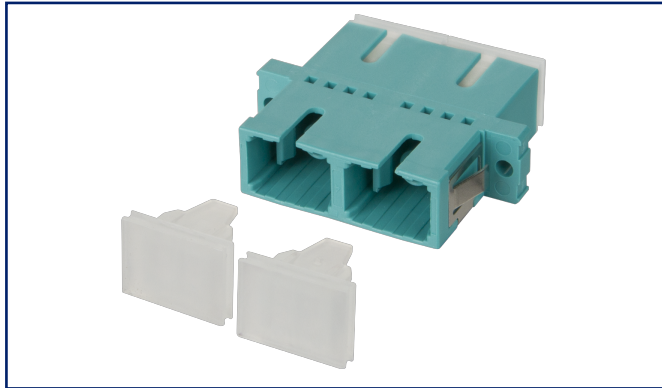
P/N  
150900BA-I

EAN 4250184149606

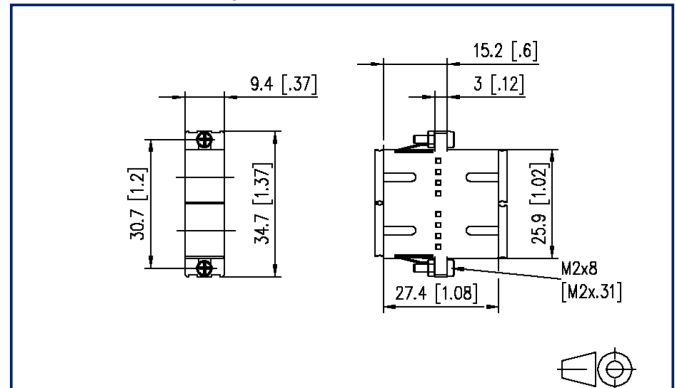
2025/09/18

Version: W

### Illustrations



Dimensional drawing



See enlarged drawings at the end of document

### Product specification

- SC duplex plastic adapter with metal clip
- slotted ceramic guide sleeves for single mode and multimode applications
- with transparent dust protection caps for a better visibility during red light test
- high material stability, surface quality and durability
- durability min. 1000 mating cycles
- screws and nuts included
- variants: blue (OS2), green (OS2 APC), lime green (OM5), violet (OM4), aqua (OM3), each variant available in packing units of 1 piece or 30 pieces



**Data sheet**  
**OpDAT adapter SC-Duplex OM3**

**P/N**  
**150900BA-I**  
**EAN 4250184149606**  
2025/09/18  
Version: W

**Technical Data**

**General Data**

Fields of application	structured building cabling fiber to the desk data center
Mechanical measurement according to MICE	M1
Ingress measurement according to MICE	I1
Climatic measurement according to MICE	C1
Electromagnetic measurement according to MICE	E3
Design	coupler / adapter (FO)
Transmission technology	Fiber optic
Color	aqua
Dimensions	
Dimension (L x W x H)	25.6 mm x 27.3 mm x 9.4 mm
Dimension (L x W x H)	1.008 in. x 1.075 in. x 0.37 in.
Mode type of the fiber	Multimode
Labeling option	on housing

**Connections/interfaces**

Connector interfaces	SC
----------------------	----

**Mechanical data**

Cut-out	SC-D, LC-Q, ST-D
Connector type	duplex
Mounting method	latchable and screwable
Life - Number of mating cycles	min. 1000

**Materials and material properties**

Material - Housing	Plastics
Material - Sleeve	ceramic, slotted
Halogen free	yes
RoHS	compliant

**OpDAT adapter SC-Duplex OM3**

P/N

150900BA-I

EAN 4250184149606

2025/09/18

Version: W

**Technical Data****Environmental conditions**

Temperature (min. - max.)

Temperature - Storage °C -40 °C - 90 °C

Temperature - Storage °F -40 °F - 194 °F

Temperature - Operating °C -40 °C - 85 °C

Temperature - Operating °F -40 °F - 185 °F

**Standards/Regulations**

Fibre optic connector interfaces SC - IEC 61754-4

**Classifications**

ETIM 7.0 EC000752

ETIM 8.0 EC000752

ETIM 9.0 EC000752

ETIM 10.0 EC000752

**Packing details**

Type of packaging 1 pc(s) / plastic bag

**Application note**

This product is a standard product of METZ CONNECT. METZ CONNECT is not aware of the specific intended use of the goods by the Customer or any customers of the Customer. The Customer guarantees that it has fully and sufficiently tested the use of the goods and any product modifications, product changes or product enhancements with regard to the specific intended use in accordance with the state of the art or in any other way. At METZ CONNECT's request, the Customer shall submit and make available meaningful evidence (e.g. test and laboratory protocols, certifications, etc.).



Data sheet  
OpDAT adapter SC-Duplex OM3

Page 4/5

P/N  
150900BA-I  
EAN 4250184149606  
2025/09/18  
Version: W

### Accessories from

P/N	Designation
1502005200-E	OpDAT PF patch panel for 12xSC-D/LC-Q/ST-D
1502205200-E	OpDAT PA patch panel for 12xSC-D/LC-Q/ST-D
150240000010E	OpDAT REGplus for 6xSC-Duplex for crimp splice holder
150240000010S	OpDAT REGplus for 6xSC-Duplex for shrink splice holder
15024A5200-E	OpDAT REGpro front cover for 6xSC-D/6xLC-Q
150250B200-E	OpDAT fix patch panel for 24xSC-D/LC-Q/ST-D
150260B200-E	OpDAT slide patch panel for 24xSC-D/LC-Q/ST-D
15036Z1B00-E	OpDAT MV patch panel 18xSC-S unequipped

## Illustrations

### Dimensional drawing

