

# Data sheet

## OpDAT adapter LC-Duplex OM5 with Snap-In mounting

Page 1/3

P/N

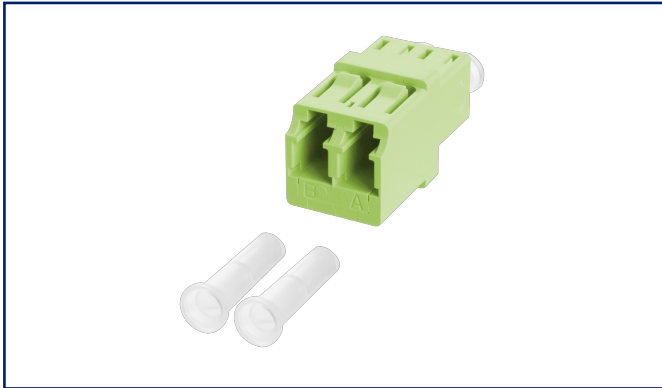
1509009107M-I

EAN 4251394604541

2025/05/27

Version: F

### Illustrations



See enlarged drawings at the end of document

### Product specification

- LC duplex plastic adapter, SC simplex design
- slotted ceramic guide sleeves for multi mode applications
- with transparent dust protection caps for a better visibility during red light test
- high material stability, surface quality and durability
- durability min. 1000 mating cycles with a ceramic guide sleeve
- snap-in mounting



# OpDAT adapter LC-Duplex OM5 with Snap-In mounting

P/N

1509009107M-I

EAN 4251394604541

2025/05/27

Version: F

## Technical Data

### General Data

Fields of application	fiber to the desk data center
Mechanical measurement according to MICE	M1
Ingress measurement according to MICE	I1
Climatic measurement according to MICE	C1
Electromagnetic measurement according to MICE	E3
Design	coupler / adapter (FO)
Transmission technology	Fiber optic
Color	lime green
Mode type of the fiber	Multimode
Shape	PC (Physical Contact)
Labeling option	on housing

### Connections/interfaces

Connector interfaces	LC
----------------------	----

### Mechanical data

Cut-out	SC, LC-D, E2000
Connector type	duplex
Mounting method	snap-in function
Life - Number of mating cycles	min. 1000
Position/mounting of latch standard installation position	top

### Materials and material properties

Material - Housing	Plastics
Material - Sleeve	ceramic, slotted
Halogen free	yes
RoHS	compliant

### Standards/Regulations

Fibre optic connector interfaces	LC - IEC 61754-20
----------------------------------	-------------------

Data sheet

Page 3/3

**OpDAT adapter LC-Duplex OM5 with Snap-In mounting**

P/N

1509009107M-I

EAN 4251394604541

2025/05/27

Version: F

**Technical Data****Classifications**

ETIM 7.0	EC000752
ETIM 8.0	EC000752
ETIM 9.0	EC000752

**Packing details**

Type of packaging	1 pc(s) / plastic bag
-------------------	-----------------------

**Application note**

This product is a standard product of METZ CONNECT. METZ CONNECT is not aware of the specific intended use of the goods by the Customer or any customers of the Customer. The Customer guarantees that it has fully and sufficiently tested the use of the goods and any product modifications, product changes or product enhancements with regard to the specific intended use in accordance with the state of the art or in any other way. At METZ CONNECT's request, the Customer shall submit and make available meaningful evidence (e.g. test and laboratory protocols, certifications, etc.).

