

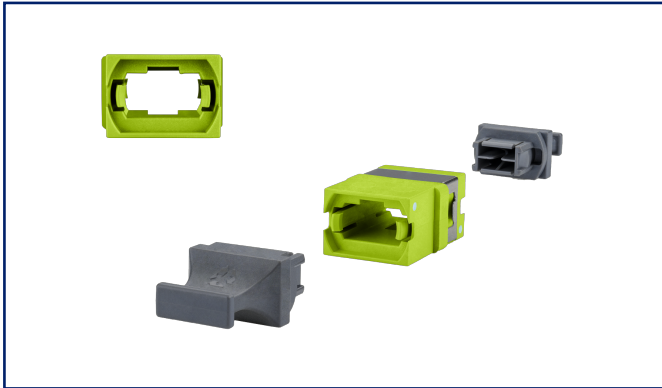
# Data sheet

## OpDAT adapter MTP® OM5 type A

Page 1/4

P/N  
1509008MA-I  
EAN 4251394657141  
2025/06/25  
Version: G

### Illustrations



See enlarged drawings at the end of document

### Product specification

- MTP® adapter plastic, color lime green for OM5
- type SC simplex with metal clip, without flange, with two dust caps
- for assignment variant type A (key up/ key down = opposed)
- high material stability, surface quality and durability
- durability at least 500 mating cycles
- variants: green (OS2), lime green (OM5), violet (OM4), aqua (OM3), each individually packed
- MTP® is a registered trademark of US Conec Ltd., USA



**Data sheet**  
**OpDAT adapter MTP® OM5 type A**

P/N  
**1509008MA-I**  
**EAN 4251394657141**  
 2025/06/25  
 Version: G

**Technical Data**

**General Data**

Fields of application	structured building cabling fiber to the desk data center
Mechanical measurement according to MICE	M1
Ingress measurement according to MICE	I1
Climatic measurement according to MICE	C1
Electromagnetic measurement according to MICE	E3
Design	coupler / adapter (FO)
Mounting style	back side
Transmission technology	Fiber optic
Color	lime green
Dimensions	
Dimension (L x W x H)	19.8 mm x 12.9 mm x 9.4 mm
Dimension (L x W x H)	0.78 in. x 0.508 in. x 0.37 in.
Mode type of the fiber	Multimode
Shape	PC (Physical Contact)
Labeling option	on housing

**Connections/interfaces**

Connector interfaces	MPO/MTP
----------------------	---------

**Mechanical data**

Cut-out	SC-S, LC-D, E2000-S
Connector type	Multifiber
Mounting method	snap-in function
Mounting style	back side
Polarity	Key Up – Key Down
For wall thickness (mm)	1.7 mm
For wall thickness (inch)	0.067 in.
Life - Number of mating cycles	min. 1000

Data sheet

Page 3/4

**OpDAT adapter MTP® OM5 type A**

P/N

1509008MA-I

EAN 4251394657141

2025/06/25

Version: G

**Technical Data****Materials and material properties**

Material - Housing	Plastics
Halogen free	yes
RoHS	compliant

**Standards/Regulations**

Fibre optic connector interfaces	MPO - IEC-61754-7
----------------------------------	-------------------

**Classifications**

ETIM 7.0	EC000752
ETIM 8.0	EC000752
ETIM 9.0	EC000752

**Packing details**

Type of packaging	1 pc(s) / plastic bag
-------------------	-----------------------

**Application note**

This product is a standard product of METZ CONNECT. METZ CONNECT is not aware of the specific intended use of the goods by the Customer or any customers of the Customer. The Customer guarantees that it has fully and sufficiently tested the use of the goods and any product modifications, product changes or product enhancements with regard to the specific intended use in accordance with the state of the art or in any other way. At METZ CONNECT's request, the Customer shall submit and make available meaningful evidence (e.g. test and laboratory protocols, certifications, etc.).



Data sheet

Page 4/4

**OpDAT adapter MTP® OM5 type A**

P/N

1509008MA-I

EAN 4251394657141

2025/06/25

Version: G

**Accessories from**

P/N	Designation
14040000-E	MCO IP69k protective housing for outdoor use, set for exposed installation
14040010-E	MCO IP69k Protective housing for outdoor use, set with mounting bracket
14040100-E	MCO IP69k Protective housing for outdoor use, set wall/ housing bushing

