

# Data sheet

## OpDAT adapter E2000-Duplex APC OS2 with flange mounting

Page 1/5

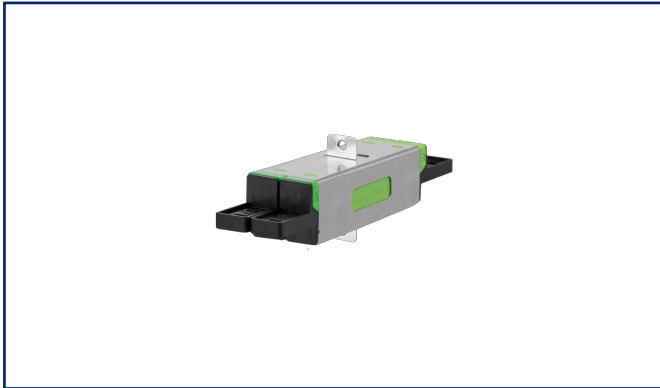
P/N  
1509005F-I

EAN 4251394602882

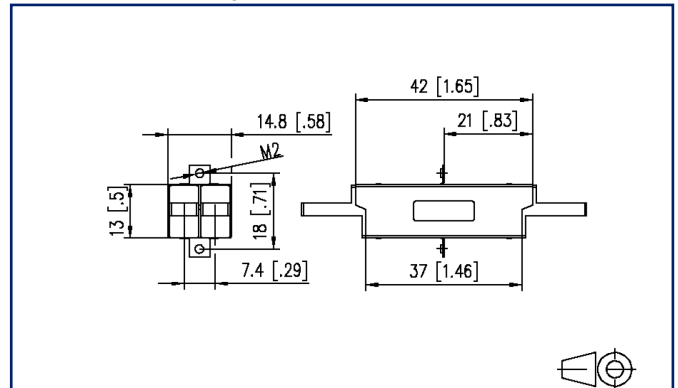
2025/09/18

Version: H

### Illustrations



Dimensional drawing



See enlarged drawings at the end of document

### Product specification

- housing of the E2000 DC (duplex compact) adapter made of plastic
- slotted sleeve made of ceramics
- high material stability and surface quality and long service life
- service life: min. 1000 plug cycles
- flange mounting
- variants: blue (SM), green (SM APC), beige (MM)



**Data sheet**  
**OpDAT adapter E2000-Duplex APC OS2**  
**with flange mounting**

**Technical Data**

**General Data**

Fields of application	structured building cabling fiber to the desk data center
Mechanical measurement according to MICE	M1
Ingress measurement according to MICE	I1
Climatic measurement according to MICE	C1
Electromagnetic measurement according to MICE	E3
Design	coupler / adapter (FO)
Transmission technology	Fiber optic
Color	green
Dimensions	
Dimension (L x W x H)	42 mm x 14.75 mm x 13 mm
Dimension (L x W x H)	1.654 in. x 0.581 in. x 0.512 in.
Weight	11.6 g
Weight	0.0256 lb
Mode type of the fiber	Singlemode
Shape	APC (Angled Physical Contact)
Labeling option	on housing

**Connections/interfaces**

Connector interfaces	E2000
----------------------	-------

**Mechanical data**

Cut-out	E2000-D
Connector type	duplex
Mounting method	screwable
Life - Number of mating cycles	min. 1000

**Materials and material properties**

Material - Housing	Plastics
Material - Sleeve	ceramic, slotted
Halogen free	yes
RoHS	compliant

**Data sheet**  
**OpDAT adapter E2000-Duplex APC OS2**  
**with flange mounting**

Page 3/5

P/N  
**1509005F-I**  
**EAN 4251394602882**  
 2025/09/18  
 Version: H

**Technical Data**

**Environmental conditions**

Temperature (min. - max.)	
Temperature - Operating °C	-40 °C - 85 °C
Temperature - Operating °F	-40 °F - 185 °F

**Certifications**

GHMT PVP		yes
----------	---	-----

**Standards/Regulations**

Fibre optic connector interfaces	LSH - IEC 61754-15
----------------------------------	--------------------

**Classifications**

ETIM 7.0	EC000752
ETIM 8.0	EC000752
ETIM 9.0	EC000752
ETIM 10.0	EC000752

**Packing details**

Type of packaging	1 pc(s) / plastic bag
-------------------	-----------------------

**Application note**

This product is a standard product of METZ CONNECT. METZ CONNECT is not aware of the specific intended use of the goods by the Customer or any customers of the Customer. The Customer guarantees that it has fully and sufficiently tested the use of the goods and any product modifications, product changes or product enhancements with regard to the specific intended use in accordance with the state of the art or in any other way. At METZ CONNECT's request, the Customer shall submit and make available meaningful evidence (e.g. test and laboratory protocols, certifications, etc.).

Data sheet

Page 4/5

## OpDAT adapter E2000-Duplex APC OS2 with flange mounting

P/N  
1509005F-I

EAN 4251394602882

2025/09/18

Version: H

### Accessories from

P/N	Designation
14040000-E	MCO IP69k protective housing for outdoor use, set for exposed installation
14040010-E	MCO IP69k Protective housing for outdoor use, set with mounting bracket
14040100-E	MCO IP69k Protective housing for outdoor use, set wall/ housing bushing
15036Z5F00-E	OpDAT MV patch panel 9xE2000-D unequipped

Data sheet

Page 5/5

**OpDAT adapter E2000-Duplex APC OS2  
with flange mounting**

P/N  
1509005F-I

EAN 4251394602882

2025/09/18

Version: H

**Illustrations**

Dimensional drawing

