

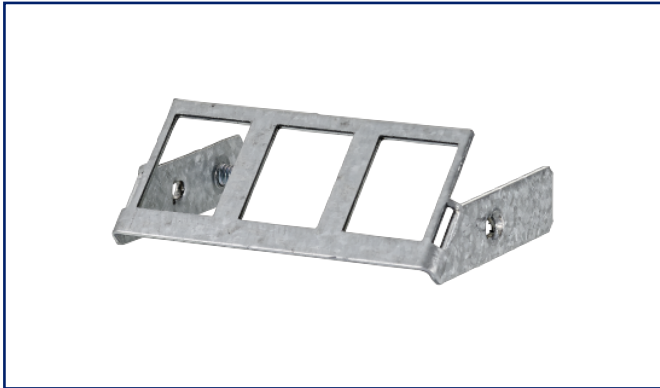
Data sheet

Subway 3 port keystone module frame

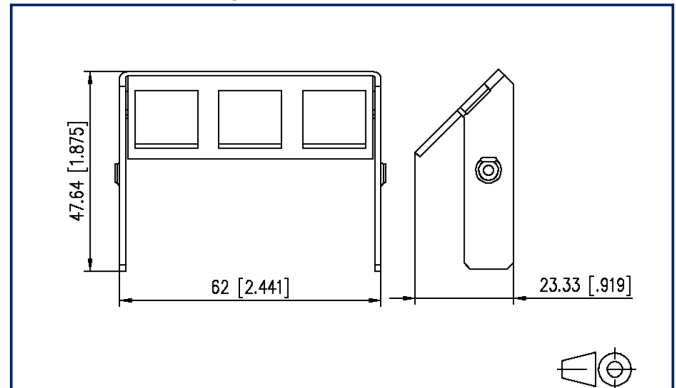
Page 1/4

P/N
1309330300KE
EAN 4250184170396
2025/09/17
Version: O

Illustrations



Dimensional drawing



See enlarged drawings at the end of document

Product specification

- zinc die-cast module frame, with connecting contact for shared equipotential bonding
- for 3 individual modules in Keystone design



Data sheet
Subway 3 port keystone module frame

P/N
1309330300KE
EAN 4250184170396
 2025/09/17
 Version: O

Technical Data

| General Data | |
|---|-----------------------------------|
| Mechanical measurement according to MICE | M1 |
| Ingress measurement according to MICE | I1 |
| Climatic measurement according to MICE | C1 |
| Electromagnetic measurement according to MICE | E3 |
| Design | module frame |
| Mounting style | Accessories |
| Color | metallike |
| Dimensions | |
| Dimension (L x W x H) | 23.33 mm x 62 mm x 47.64 mm |
| Dimension (L x W x H) | 0.919 in. x 2.441 in. x 1.876 in. |

| Materials and material properties | |
|-----------------------------------|-----------|
| Material | metal |
| Halogen free | yes |
| RoHS | compliant |

| Classifications | |
|-----------------|----------|
| ETIM 7.0 | EC002608 |
| ETIM 8.0 | EC002608 |
| ETIM 9.0 | EC002608 |
| ETIM 10.0 | EC002608 |

| Packing details | |
|-------------------|-----------------------|
| Type of packaging | 1 pc(s) / plastic bag |

Application note

This product is a standard product of METZ CONNECT. METZ CONNECT is not aware of the specific intended use of the goods by the Customer or any customers of the Customer. The Customer guarantees that it has fully and sufficiently tested the use of the goods and any product modifications, product changes or product enhancements with regard to the specific intended use in accordance with the state of the art or in any other way. At METZ CONNECT's request, the Customer shall submit and make available meaningful evidence (e.g. test and laboratory protocols, certifications, etc.).

Data sheet

Page 3/4

Subway 3 port keystone module frame

P/N

1309330300KE**EAN 4250184170396**

2025/09/17

Version: O

Accessories from

| P/N | Designation |
|----------------|--|
| 130B20S50301-E | Subway underfloor unit GB2 Keystone 3 port unequipped pearl white |
| 130B20S50601-E | Subway underfloor unit GB2 Keystone 6 port unequipped pearl white |
| 130B20S50901-E | Subway underfloor unit GB2 Keystone 9 port unequipped pearl white |
| 130B20S60301-E | Subway underfloor unit GB3 Keystone 3 port unequipped pearl white |
| 130B20S60601-E | Subway underfloor unit GB3 Keystone 6 port unequipped pearl white |
| 130B20S60901-E | Subway underfloor unit GB3 Keystone 9 port unequipped pearl white |
| 130B20S61201-E | Subway underfloor unit GB3 Keystone 12 port unequipped pearl white |



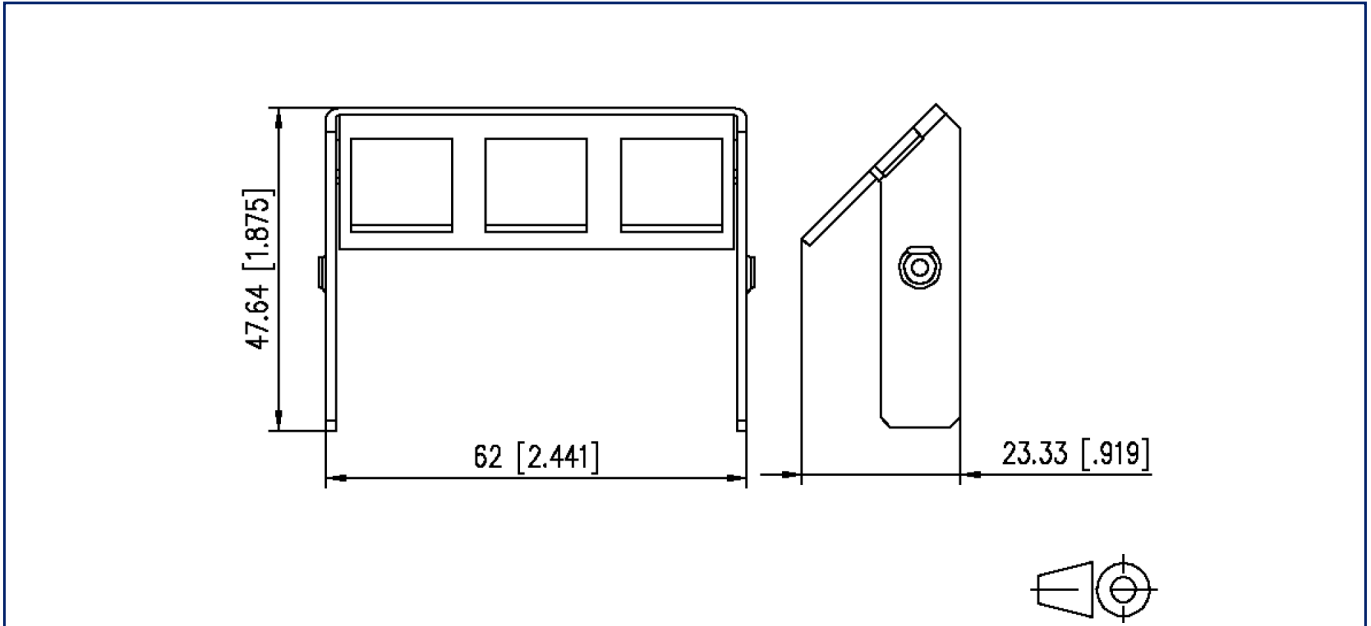
Data sheet
Subway 3 port keystone module frame

Page 4/4

P/N
1309330300KE
EAN 4250184170396
2025/09/17
Version: O

Illustrations

Dimensional drawing



© 2025 METZ CONNECT - Technische Änderungen vorbehalten! Subject to modifications! Sous réserve de modifications techniques!

