

# Data sheet

## OpDAT fix<sup>2</sup> patch panel splice

### 6xLC-D OM3 gray

Page 1/6

P/N

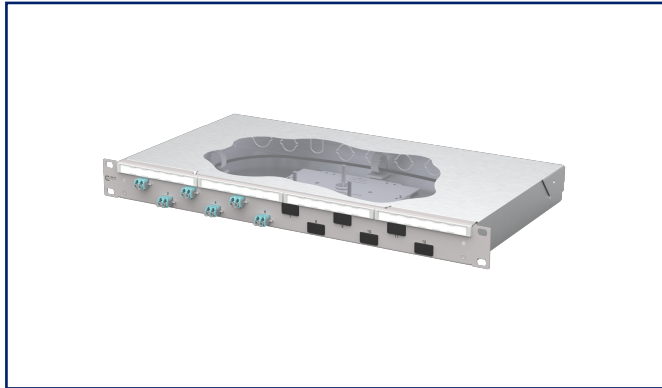
1504557706-F

EAN 4251394677613

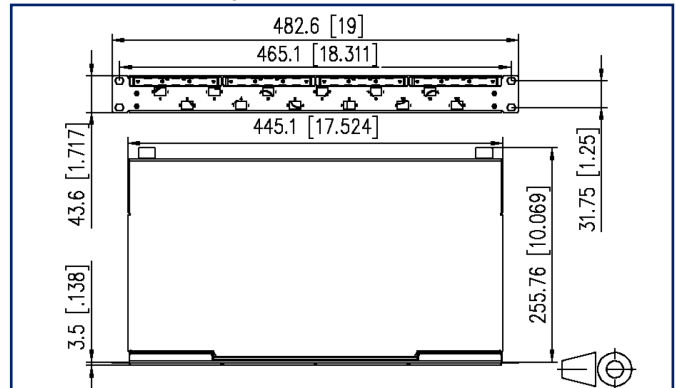
2025/10/09

Version: E

## Illustrations



Dimensional drawing



See enlarged drawings at the end of document

## Product specification

- 19-inch, 1RU patch panel for fixed installation
- Equipped with 6xLC-D couplers and 12xLC-D OM3 pigtails
- Offset coupler arrangement for easy handling
- Pigtails inserted and set down in standard splice cassette with crimp splice holders
- Pigtail visually inspected and inserted into couplers
- Color coding according to IEC 60304
- Front panel with labelling field
- Front panel powder-coated in gray RAL 7035
- Tool-free opening of the cover
- Several possibilities for cable entry on the back: 6xM20; 2xM25; 2xPrefab installation cut-outs



**Data sheet**  
**OpDAT fix<sup>2</sup> patch panel splice**  
**6xLC-D OM3 gray**

**Technical Data**

**General Data**

|                                   |   |
|-----------------------------------|---|
| Fields of application             | data center<br>office areas<br>structured building cabling<br>interior<br>Distributed building services |
| Design                            | Fixed installation  |
| Mounting style                    | screwable   |
| Transmission technology           | Fiber optic   |
| Port numbering                    | yes   |
| Color housing                     | metal   |
| Color front plate                 | RAL 7035 - light gray   |
| Adapter color                     | aqua  |
| Dimensions                        |   |
| Dimension (L x W x H)             | 259 mm x 483 mm x 44 mm   |
| Dimension (L x W x H)             | 10.197 in. x 19.016 in. x 1.732 in.   |
| Inches                            | 19 inches   |
| Height unit                       | 1RU   |
| Installation depth                | 256 mm  |
| Installation depth                | 10.079 in.  |
| Number of cables/ buffered fibers | 12  |
| Cable Type                        | pigtail(s)  |
| Fiber class                       | OM3   |
| Mode type of the fiber            | Multimode   |
| Shape                             | PC (Physical Contact)   |
| Fiber construction                | 50/125 µm   |
| Labeling option                   | label strip / labeling strip  |

**Connections/interfaces**

|                                 |      |
|---------------------------------|------|
| Adapter type                    | LC-D |
| Adapter interface outside       | LC-D |
| Adapter interface inside        | LC-D |
| Number of adapters              | 6    |
| Number of breakouts front panel | 12   |
| Number of blind                 | 6    |



Data sheet  
**OpDAT fix<sup>2</sup> patch panel splice**  
**6xLC-D OM3 gray**

Page 4/6

P/N  
1504557706-F  
EAN 4251394677613  
2025/10/09  
Version: E

## Technical Data

### Classifications

|           |          |
|-----------|----------|
| ETIM 8.0  | EC001130 |
| ETIM 9.0  | EC001130 |
| ETIM 10.0 | EC001130 |

### Packing details

|                   |               |
|-------------------|---------------|
| Type of packaging | 1 pc(s) / box |
|-------------------|---------------|

### Application note

This product is a standard product of METZ CONNECT. METZ CONNECT is not aware of the specific intended use of the goods by the Customer or any customers of the Customer. The Customer guarantees that it has fully and sufficiently tested the use of the goods and any product modifications, product changes or product enhancements with regard to the specific intended use in accordance with the state of the art or in any other way. At METZ CONNECT's request, the Customer shall submit and make available meaningful evidence (e.g. test and laboratory protocols, certifications, etc.).



Data sheet  
**OpDAT fix<sup>2</sup> patch panel splice**  
**6xLC-D OM3 gray**

Page 5/6

P/N  
**1504557706-F**  
**EAN 4251394677613**  
2025/10/09  
Version: E

## Accessories

| P/N          | Designation                                      |
|--------------|--|
| 150240M20Z-E | OpDAT strain relief M20                          |
| 150240M25Z-E | OpDAT strain relief M25                          |
| 150240Z20Z-E | OpDAT strain relief for M20                      |
| 1509010000-E | OpDAT splice tray for 12 splices, unequipped     |
| 1509010001-E | OpDAT splice tray with 1 crimp protection cover  |
| 1509010002-E | OpDAT splice tray with 2 splice protection cover |
| 15090200-E   | OpDAT cover for splice tray                      |



Data sheet  
**OpDAT fix<sup>2</sup> patch panel splice**  
**6xLC-D OM3 gray**

Page 6/6

P/N  
**1504557706-F**  
**EAN 4251394677613**  
 2025/10/09  
 Version: E

**Illustrations**

Dimensional drawing

